

NAME _____ DATE _____ PERIOD _____

PREPARING FOR THE HUNT

Instructions: Read the following scenarios for each hunting trip experience. Use the 1987 Penn-rich (Woolrich Inc.) catalog below for hunting items. Prices can be found on the last three pages of the catalog. In order to match your selections with a price, you can match the item with either the page number the item is on or by the style number.

Scenario _____

Cash Available: _____

Items	Description	Reason for purchase	Size	\$ Price

Total Cost: _____

SCENARIOS

Scenario #1: A Day hunting trip

You have planned to go hunting with your friends in late November. Now you are ready to go into the woods for several hours, but as you look the temperature outside is 45 degrees and projected to fall into the upper 30s, what outdoor clothing would you prepare with \$110.00.

Scenario #2: Camping/Hunting in winter

You are going camping for a week-long winter hunting trip to Alberta, Canada. Before the end of the week, you must purchase 3 sets of Woolrich outdoor apparel. You have a total of \$500.00 dollars to spend for the week. As of today, the temperature in Alberta all week will be a high of 25 degrees and a low of 10 degrees. But beware, the forecast proposes an 80 percent chance of snow up to 3 inches, and 15 mph wind gusts. Be smart and prepare with Woolrich Inc.

Scenario #3: Day trip to the Allegheny Mountains

For a while now, you have been eager to get your second chance at hunting. Finally, you have received your chance to hunt in the Allegheny Mountains of Pennsylvania in September. The weather projections suggest that it will be 65 degrees and sunny. You must determine what your most essential needs are. You currently have a budget of only \$80.00. Although, you can forgo a coat for this hunting trip, be wary about temperature changes as the sunsets.

Scenario #4: A 3-day trip at the start of Deer Season

You and a few friends are eager to get into the wild for a deer hunt as the season opens. November 27th to the 29th are the dates and temperatures range from 59°F to 47°F for those three days. You want to make sure to pack warm enough for a brisk wind although, during the middle of the day, temperatures might reach a sunny 60 degrees. Woolrich offers multiple varieties in hunting apparel so you will need to buy one full outfit ready to withstand the cold and some layers to take off to stay cool in the middle of the day. \$250.00 is your budget.

1987 Penn-Rich® Hunting Line by Woolrich

No one understands the needs of the hunter like Woolrich, because we've been outfitting woodsmen and sportsmen for 157 years. This broad selection of Woolrich apparel is "made in America" since 1830.



Because it takes experience to know when it's right.

CamWOOLflage® 100% Virgin Wool

CamWOOLflage® — 100% pure wool woven fabric made into the finest hunting clothes found anywhere. No other manufacturer knows or understands the combination of pure wool and camouflage huntingwear like Woolrich — because only Woolrich makes camo in pure wool from start to finish. Here in our own woolen mill we take raw wool and process it into finished product through a series of carefully controlled manufacturing steps developed and perfected over the last 157 years. Last year our CamWOOLflage® won one of the industry's most coveted awards for new products, but more importantly it won the enthusiastic approval of hunters across America. CamWOOLflage® is today's best value for hunters who want the quietness, warmth, and durability of 100% wool in tan or green concealment patterns.

And, with our new hooded Blanchard Hunt Parka we have taken CamWOOLflage® one step further. This unique style is made of a 14 oz. CamWOOLflage® laminated with Gore-Tex® and is lined with the new Gore Dry Line™ fabric. The Blanchard is obviously the ultimate in windproof, waterproof, breathable warmth. And, CamWOOLflage® is available this year in our exclusive Shadowbark™ pattern designed especially for concealment in the woods.

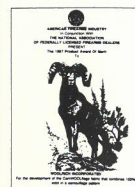
How good is CamWOOLflage®? Ask Safari Club record holder Dave Ehrig. "The green CamWOOLflage® was very effective in keeping my silhouette invisible" said Ehrig. "I stalked a bull caribou over 500 yards of rolling gray-green tundra before finally taking a shot at 50 yards with my .54 caliber muzzle loader. Not only did the bullet find its mark, but the huge antlers left their mark in the record book of Safari Club International. Some of the other strong points that allow me to recommend CamWOOLflage® to other sportsmen include the heavy duty reinforcement at stress points, the reinforced waistband and pockets, the good number of belt loops, and the overall "class" with which the garment is tailored." ▶

*1986 American Firearms Industry Award for new products.

Front cover: Sterner's General Store,
Dewart, PA



Archer Hunt Shirt and Archer Hunt
Pant; Camo Chamois Shirt and Hemlock
Hunt Bib; CamWOOLflage® Hats.





(Above) Lebo Hunt Jacket and Archer Hunt Pant;
(Left) Lebo zip-off sleeve and CamWOOLflage® Field Cap.



ARCHER HUNT SHIRT

155, 155,L Green

156, 156,L Tan

14 oz. CamWOOLflage®

2 chest pockets with Velcro® closures

Tuck-in shirttail

Length 32"

Sizes S-3XL (L) M-2XL



ASPEN HUNT JACKET

860 Tan

880 Green

18 oz. CamWOOLflage®

Unlined

Zip front

Knit cuffs and waistband

License holder

2 front patch handwarmer pockets

Length 25"

Sizes S-3XL



LEBO HUNT JACKET

745 Tan

746 Green

18 oz. CamWOOLflage®

Nylon lined

100 weight Thinsulate® insulation

Knit cuffs

Zip front

Zip-off sleeves

Zip close game pocket on right back

License holder

Length 26½"

Sizes S-3XL



ARCHER HUNT PANT

1418 Green

1419 Tan

18 oz. CamWOOLflage®

Suspender buttons

2 on-seam pockets

2 flapped hip pockets

Sizes — Scale 8



HEMLOCK HUNT BIB

1981 Tan

1982 Green

18 oz. CamWOOLflage®

1 front top pocket

2 front quartertop pockets

2 back patch pockets

Fly front

Button-side closures

Adjustable elastic shoulder straps

36" unfinished

Sizes S-3XL



BLANCHARD HUNT PARKA 7274

Tan CamWOOLflage® with Gore-Tex® shell

Gore Dryline™ liner

Zip front with snap-over storm flap

Adjustable Velcro® cuffs

Detachable hood

2 lower dual entry patch pockets

Length 33"

Sizes S-3XL

DRYLINE™
FABRIC

GORE-TEX®
FABRIC

SCALE 8

INSEAM	30	32	34	36	38	40	42	44	46	48	50
UNFINISHED	X	X	X	X	X	X	X	X	X	X	X

Shadowbark™ Camouflage

Conceal yourself among the trees in new Shadowbark™. For 1987 we researched and perfected the bark camo concept and field tested it under a variety of hunting conditions and environments. And, new Shadowbark™ proved more effective than the competition. Since wool is what we do best, we combined this proven camo pattern with 100% wool fabric and by doing so created another first in the hunting market — Shadowbark™ CamWOOLflage®.

Three new 100% wool styles in our exclusive Shadowbark™ are available for superior warmth, comfort, and quietness during cold weather hunting.

And since no one knows the hunter better than Woolrich, we offer three new Shadowbark™ styles, too, in lightweight, yet durable Competitor™ Cloth that exactly matches our wool pattern.

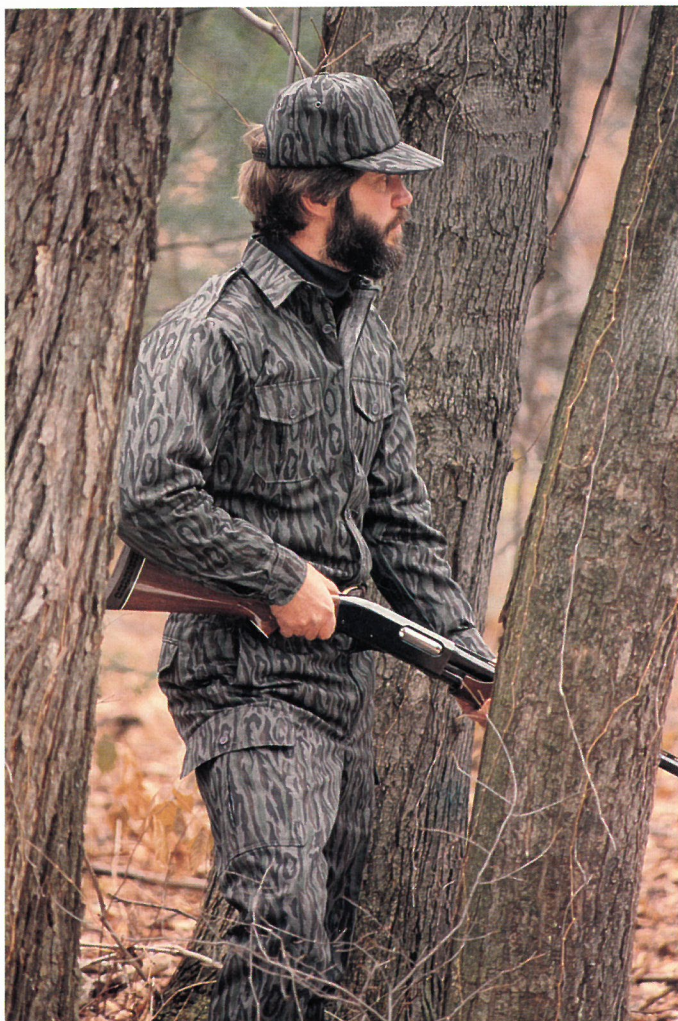
The key? Genuine Woolrich Shadowbark™ has our name hidden in the pattern.



Hickory Hunt Jacket, Compound Hunt Shirt, and Compound Hunt Pant.



Shadowbark™ Competitor™ Cloth is treated with Du Pont Zepel®, rain/stain repeller.



Broadhead Hunt Shirt and Broadhead Hunt Pant.



Genuine Woolrich Shadowbark™ has our name hidden in the pattern.

CamWOOLflage® COMPOUND HUNT SHIRT 170

100% wool, 18 oz. CamWOOLflage®
2 chest pockets with Velcro® closures
Tuck-in shirttail
Length 32"
Sizes S-3XL



COMPOUND HUNT PANT 180

100% wool, 18 oz. CamWOOLflage®
Suspender buttons
2 on-seam pockets
2 flapped hip pockets
Sizes — Scale 8



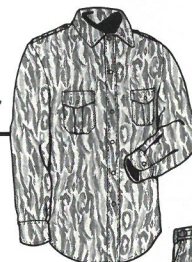
HICKORY HUNT JACKET 940

100% wool, 18 oz. CamWOOLflage® shell
Unlined
Zip front
Knit cuffs and waistband
License holder
2 front patch handwarmer pockets
Length 25"
Sizes S-3XL



Competitor™ Cloth BROADHEAD HUNT SHIRT 147

Competitor™ Cloth
Functional epaulets
2 pleated patch chest pockets
Sizes S-3XL



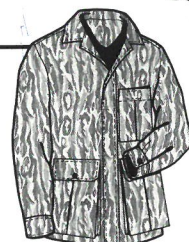
BROADHEAD HUNT PANT 157

Competitor™ Cloth
Adjustable waist tabs
Belt loops
2 front quartered top pockets
2 rear button flap pockets
2 thigh button flap cargo pockets
Drawstring bottoms
Sizes S-3XL



BUSH HUNT COAT 6737

Green Competitor™ Cloth
Concealed front placket
Button cuffs
License holder
1 bellows chest pocket with Velcro® closures
2 bottom bellows pockets with inverted pleat and flap closures
Length 31½"
Sizes S-3XL



SCALE 8

INSEAM	30	32	34	36	38	40	42	44	46	48	50
UNFINISHED	X	X	X	X	X	X	X	X	X	X	X

Competitor™ Cloth Camouflage 50% Cotton/50% Polyester

To continue the success of our Tan and Green Competitor™ Cloth Camouflage Program we've made additions to an already broad line of vests, shirts, pants, jackets, and parkas. Competitor™ Cloth, a 50/50 poly/cotton blend, remains one of the quietest, most durable shell fabrics in the industry. Our tan camo line includes some styles with waterproof, windproof, breathable Gore-Tex® fabric and insulated with Thinsulate®, or down. They carry the Gore-Tex® "Rainwear Without Compromise" Hangtag. Perfect for cold and wet weather waterfowling — like our new down-filled Teal Hunt Parka. Whether tan or green, our Competitor™ Cloth camo patterns exactly match our CamWOOLflage® patterns for improved layering flexibility. And, some styles reverse from tan to green to match conditions in the field.

Mallard Hunt Jacket;
Teal Hunt Parka and Mallard Hunt Pant;
CamWOOLflage® Hats.

GORE-TEX®
fabric



Mark IV Waterfowl Parka and Gadwall
Hunt Bib.

GORE-TEX®
fabric



Magnum Hunt Vest, Camo Chamois Shirt, and Fly-Way Hunt Pant; Birdmaster
Hunt Jacket and Fly-Way Pant; CamWOOLflage® Hats.



Pine Mountain Parka and Malone Hunt Pant; Beechwood Hunt Jacket and Brushmaster Hunt Pant.

Bush Hunt Jacket and Brushmaster Hunt Pant; Pocono Hunt Vest, Archer Hunt Shirt and Malone Hunt Pant.

Competitor™ Cloth camo garments are treated with Du Pont Zepel® rain/stain repeller.

Tan Competitor™ Cloth

FLY-WAY HUNT SHIRT 127

Competitor™ Cloth
Functional epaulets
2 pleated patch chest pockets
Sizes S-3XL



MAGNUM HUNT VEST 33402

Tan Competitor™ Cloth reversing to
green Competitor™ Cloth
200 weight Thinsulate® insulation
Zip front
Upper left "call" pocket
2 lower dual handwarmer cargo pockets
Covered shell loops
Shooters patch
Length 28" with kidney warmer
Sizes S-3XL



BIRDMASTER JACKET 33425, 33425 L

Tan Competitor™ Cloth reversing to
green Competitor™ Cloth
200 weight Thinsulate® insulation
Zip front
Knit cuffs and waistband
2 lower fleecelined handwarmer pockets
License holder
Covered shell loops (tan side only)
Length 25"
Sizes S-3XL (L) M-2XL



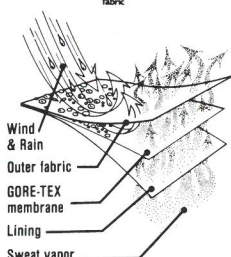
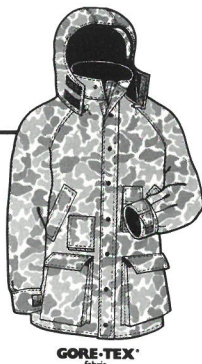
MALLARD HUNT JACKET 33440

Tan Gore-Tex® Competitor™ Cloth shell
Nylon lined
200 weight Thinsulate® insulation
Zip front with double snap-over storm flap
and beard flap
Adjustable Velcro® cuffs
Snap on hood — Thinsulate® lined
with drawcord
2 lower fleece lined handwarmer pockets
with flap
License holder
Length 25"
Sizes S-3XL



PINTAIL HUNT PARKA 7275, 7275 L

Gore-Tex® Competitor™ Cloth shell
Nylon lined
Zip front with snap-over storm flap
Knit neck warmer
Adjustable Velcro® cuffs
Detachable hood
2 upper handwarmer pockets
Upper left "call" pocket
2 lower dual entry cargo pockets
Covered shell loops
Length 33"
Sizes S-3XL (L) M-2XL



All Woolrich Gore-Tex® Parkas carry the
"Rainwear Without Compromise" hangtag.

Tan Competitor™ Cloth cont'd.

TEAL HUNT PARKA 21040

Tan Gore-Tex® Competitor™ Cloth shell
Nylon lined
Duck Down insulation
2-way zip front with double snap over
storm flap and beard flap
Knit neck warmer
Adjustable Velcro® cuffs
Snap on Down — filled hood
Inside waist drawcord
Top handwarmer pockets with flaps
Shellholder with flap
Upper left "call" pocket with Velcro® flap
2 bottom bellows pockets with added
snap extension feature
Length 32"
Sizes S-3XL

FLY-WAY HUNT PANT 6527

Competitor™ Cloth shell
Adjustable waist tabs
Belt loops
2 front quartered top pockets
2 rear button flap pockets
2 thigh button flap cargo pockets
Drawstring bottoms
Sizes S-3XL

MALLARD HUNT PANT 33460

Tan Gore-Tex® Competitor™ Cloth shell
Nylon lined
150 weight Thinsulate® insulation
Fly front with elastic-back waistband
Belt loops
Suspender buttons
2 on-seam pockets
1 back pocket with flap and
snap closures
Side zip legs with Velcro® closures
at hem (2-way zipper)
Sizes S-3XL

GADWALL HUNT BIB 6550

Gore-Tex® Competitor™ Cloth shell
Adjustable shoulder straps
Wetted zip pocket openings
Shell loops
Side leg zippers
Elastic leg bottoms
Sizes S-3XL

MARK IV WATERFOWL PARKA 33450

Gore-Tex® Competitor™ Cloth shell
Nylon lined
Zip front with snap-over storm flap
Detachable Thinsulate® hood
2 upper handwarmer pockets
Upper left "call" pocket
Covered shell loops
2 lower dual entry cargo pockets
Length 33"
Sizes S-3XL

Reversible Zip-Out Jacket

Tan Competitor™ Cloth shell
200 weight Thinsulate® insulation
Zip front
Knit collar and cuffs
Upper left zipper topo pocket
2 lower handwarmer pockets





GORE-TEX[®]
fabric



GORE-TEX[®]
fabric



GORE-TEX[®]
fabric



GORE-TEX[®]
fabric

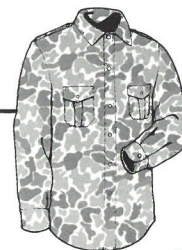


Reverses to:
Nylon shell
2 lower zipper handwarmer pocket
Length 28"

Green Competitor™ Cloth

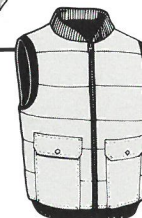
BRUSHMASTER HUNT SHIRT 129

Competitor™ Cloth
Functional epaulets
2 pleated patch chest pockets
Sizes S-3XL



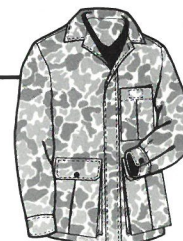
POCONO HUNT VEST 21800

Green Competitor™ Cloth reversing
to Blaze Orange 10 Mile Cloth®
Down insulation
Zip front
Knit collar
2 lower dual entry handwarmer cargo pockets
License holder
Shell loops (camouflage side only)
Length 28" including kidney warmer
Sizes S-3XL



BUSH HUNT JACKET 6730

Green Competitor™ Cloth shell
Concealed front placket
Button cuffs
License holder
1 bellows chest pocket with Velcro® closures
2 bottom bellows pockets with inverted
pleat and flap closures
Length 31½"
Sizes S-3XL



BEECHWOOD HUNT JACKET 815

Green Competitor™ Cloth shell
Chamois lined
Zip front
Knit cuffs and waistband
License holder
2 front handwarmer jackets
Length 25"
Sizes S-3XL



PINE MOUNTAIN PARKA 33432

Competitor™ Cloth shell
Nylon lined
200 weight Thinsulate® insulation
Zip front with snap-over storm flap
Knit neck warmer
Adjustable Velcro® cuffs
Detachable hood
2 upper handwarmer pockets
Upper left "call" pocket
2 lower dual entry cargo pockets
Covered shell loops
Length 33"
Sizes S-3XL



BRUSHMASTER HUNT PANT 6529

Competitor™ Cloth shell
Adjustable waist tabs
Belt loops
2 front quartered top pockets
2 rear button flap pockets
2 button flap thigh cargo pockets
Drawstring bottoms
Sizes S-3XL



Classic Red and Black Plaids 85% Wool/15% Nylon

For years the Woolrich red and black plaids were synonymous with hunting. Today, in many ways, they still are. Woolrich red and black is a tradition that's been sustained for over 150 years. That's because we take raw wool, spin it into yarn, dye it, weave it into fabric, full it (shrink) and inspect it numerous times before it's cut and sewn into our original wool hunting clothes. And it's all done right here in Woolrich, Pennsylvania by people who know the outdoors. You'll find an assortment of warm, durable, wool-blend hunting clothes in a variety of styles.

Richie 4-in-1 Hunt Coat and 1963 Hunt Pant; 503 Coat and 1993 Hunt Pant.



Wool Hunt Bib and Chamois Shirt.



Cruiser Coat and Malone Hunt Pant; Stag Jacket and Malone Hunt Pant; Red and Black Field Cap.



NORTHERN TIER VEST 66

30 oz.
Zipper front
4 front patch pockets
Adjustable back belt with buckle
Length 25"
Sizes S-3XL



WHITE TAIL VEST 626

18 oz.
Red/Black Plaid reversing to
Blaze Orange 10 Mile Cloth®
Snap front
Wool side:
— Lower patch pockets
Length 27"
Sizes S-3XL



STAG JACKET 124, 124 L

20 oz.
Zipper front
Front and back double yoke
2 upper patch pockets
2 lower handwarmer pockets
Lower rear stowage pocket
Length 29"
Sizes S-3XL (L) M-2XL



HUNT COAT 503, 503 L

30 oz.
Brushed cotton twill lining
Concealed button front placket
Button close throat latch
Storm cuffs
2 upper patch pockets
2 lower dual entry handwarmer patch pockets
Lower rear stowage pocket
Length 30"
Sizes 36-60 (L) 40-50



HUNT PANT 1993

30 oz.
Belt loops
Suspender buttons
2 front on-seam pockets
2 rear flap pockets
Double knee and seat
Knit cuff bottoms
Sizes 30-48 (even)



HUNT COAT 505

24 oz.
Brushed cotton twill lining
Concealed button front placket
Button close throat latch
Storm cuffs
2 upper patch pockets
2 lower dual entry handwarmer patch pockets
Lower rear stowage pocket
Length 30"
Sizes 36-60



HUNT PANT 1405

24 oz.
Belt loops
Suspender buttons
2 front on-seam pockets
2 rear flap pockets
Double knee
Knit cuff bottoms
Sizes 32-44 (even)



HUNT COAT 523, 523 L

21 oz.
5.5 oz. quilted polyurethane lining
Concealed button front placket
Button close throat latch
Storm cuffs
2 upper patch pockets
2 lower dual entry handwarmer patch pockets
Lower rear stowage pocket
Length 30"
Sizes 34-54 (L) 40-50



HUNT PANT 1963

21 oz.
3.3 oz. quilted polyurethane lining
Belt loops
Suspender buttons
2 front on-seam pockets
2 rear flap pockets
Knit cuff bottoms
Sizes 30-48 (even)



CRUISER COAT 13054

24 oz.
Button cuffs
2 top patch pockets (shell holder
— left side only)
Left inside patch pocket
2 lower cargo patch pockets (compass
pocket — left side only)
Lower rear stowage pocket
Length 30"
Sizes S-3XL



RICHIE HUNT COAT (4-in-1) 33480

21 oz.
Poplin lining
Concealed button front placket
Upper right patch pocket
Upper left zipper topo pocket
2 lower dual entry handwarmer patch pockets
Lower rear stowage pocket
Length 31"
Sizes S-3XL



Reversible Jacket Liner

Green Competitor™ Cloth shell
100 weight Thinsulate® insulation
Zipper front
Knit collar and cuffs
Upper left zipper topo pocket
2 lower cargo pockets with
concealed shell loops
License holder
Length 28"

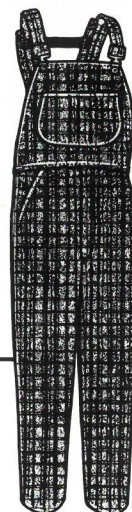


Reverses to:
Blaze Orange 10 Mile Cloth® shell
2 lower zipper handwarmer pockets
license holder
Combined: Big Game Coat



WOOL HUNT BIB 1995

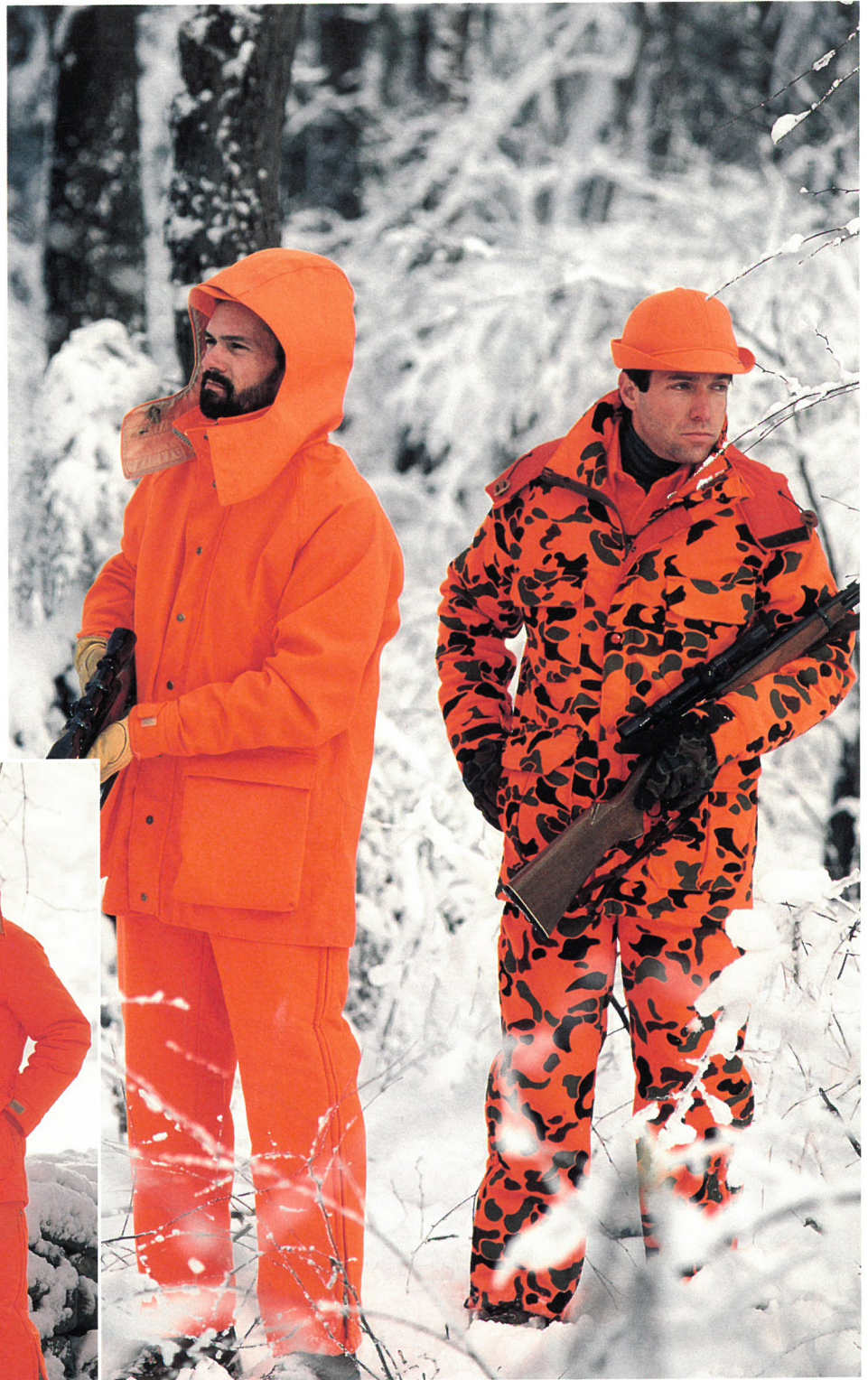
24 oz.
Adjustable elastic shoulder straps
Chest pouch pocket
2 front quartertop pockets
2 rear patch pockets
Sizes XS-3XL (unfinished bottoms)



Blaze and Blaze Camouflage

Woolrich blaze and blaze camouflage is made with famous 10 Mile Cloth® America's premier hunter orange fabric. Specifically engineered to appear bright in daylight, dawn and dusk, it meets or exceeds all safety standards. And 10 Mile Cloth® is quiet. It's the only hunter orange fabric that won't rustle when brushed by twigs or rubbed against itself. Plus it remains soft and flexible in cold weather and is treated with Zepel® for rain and stain resistance.

Because safety regulations are changing across the nation, we've expanded and modified our line to include a new 10 Mile Cloth® Parka in Gore-Tex®, that carries Gore's "Rain-wear Without Compromise" Hangtag, as well as a new blaze orange safety vest that's designed to wear over red and black plaids and camouflage hunting garments.



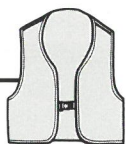
Bucktail Hunt Parka and Allegheny Hunt Pant; High Country Hunt Parka and Snow Mountain Hunt Bib.



Barrier Hunt Coat and Allegheny Hunt Pant; 8 Pt. Barrier Hunt Coat and Allegheny Hunt Pant.

SAFETY HUNT VEST 63

Blaze Orange 10 Mile Cloth® shell
Velcro® closure
Sizes M-XL



CATSKILL HUNT COAT 981

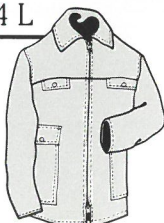
10 Mile Cloth® reversing to 20 oz. 85% wool/
15% nylon red and black plaid

Zipper front
2 lower dual entry handwarmer cargo pockets
(both sides)
Length 31"
Sizes S-3XL



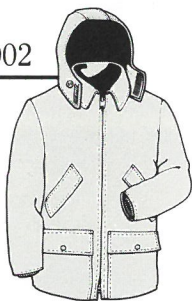
BARRIER HUNT COAT 20084, 20084 L

10 Mile Cloth® shell
100 weight Thinsulate® insulation
2-way zip front with inside storm flap
Bi-swing action back
2 upper chest pockets
2 lower dual entry handwarmer cargo pockets
Lower rear stowage pocket
Length 31"
Sizes S-3XL (L) M-2XL



8 PT. BARRIER HUNT COAT 21002

10 Mile Cloth® shell
Nylon lined
Down insulation
2-way zip front with inside storm flap
Storm cuffs
Detachable snap-off hood
Bi-swing action back
Detachable game bag
Inside full waist drawcord
Inside zipper pocket
2 upper flap handwarmer pockets
2 lower cargo pockets
Length 31"
Sizes S-3XL



BUCKTAIL HUNT PARKA 7277

Gore-Tex® 10 Mile Cloth® shell
Nylon lined
Zip front with snap-over storm flap
Knit neck warmer
Adjustable Velcro® cuffs
Detachable hood
2 upper handwarmer pockets
2 lower dual entry cargo pockets
Length 33"
Sizes S-3XL (L) M-2XL



GORE-TEX®
fabric

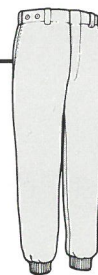
TIOGA HUNT PARKA 33379, 33379 L

10 Mile Cloth® shell
200 weight Thinsulate® insulation
2-way zip front with snap-over storm flap
Gusseted Velcro® closures on cuffs
Detachable snap-off hood
Inside full waist draw cord
Inside zipper pocket
2 pleated chest patch pockets
2 lower dual entry pleated handwarmer cargo pockets
Lower rear stowage pocket
Length 33"
Sizes S-3XL (L) M-2XL



BARRIER HUNT PANT 20094

10 Mile Cloth® shell
100 weight Thinsulate® insulation
Belt loops
Suspender buttons
2 on-seam pockets
2 rear flap pockets
3" knit cuff bottoms
Sizes 30-50



ALLEGHENY HUNT PANT 33319

10 Mile Cloth® shell
150 weight Thinsulate® insulation
Suspender buttons
Elastic back waistband with belt loops
2 front on-seam pockets
2 rear flap pockets
Full side seam 2-way zipper on legs
with Velcro® closures
Length S-30, M-31, L-32, XL-3XL-33
Sizes S-3XL



HIGH COUNTRY HUNT PARKA 33435

Camouflage 10 Mile Cloth® shell
200 weight Thinsulate® insulation
2-way zip front with snap-over storm flap
Gusseted Velcro® closures on cuffs
Detachable snap-off hood
Inside full waist draw cord
Inside zipper pocket
2 pleated chest patch pockets
2 lower dual-entry pleated handwarmer cargo pockets
Lower rear stowage pocket
Length 33"
Sizes S-3XL



SNOW MOUNTAIN HUNT BIB 33470

Camouflage 10 Mile Cloth® shell
Nylon lined
150 weight Thinsulate® insulation
2-way zip front with inside storm flap
Adjustable denier nylon shoulder straps
2 front shell holders
2 lower patch cargo pockets
Full side seam 2-way zipper on legs
with Velcro® closures
Sizes S-3XL



10 Mile Cloth® is a registered trademark of Burlington Industries. All Woolrich 10 Mile Cloth® garments are treated with Du Pont Zepel® rain/stain repeller.

Fleece Woodland Camouflage 100% Polyester



This year we're offering an outfit in soft, lightweight 100% polyester fleece. It's designed to keep hunters warm and dry by wicking moisture away from the body.

SUREFLIGHT JACKET 580

Unlined
Knit cuffs
Drawcord waist with mini lock fasteners
Exposed zip front
Unlined hood with drawcord
Raglan sleeves
2 front handwarmer patch pockets
License holder
Length 26"
Sizes S-3XL



SUREFLIGHT PANT 590

Fly front with button closure
Belt loops
Adjustable size tabs
1 back pocket with button closure
2 front on-seam pockets
Sizes S-3XL



SCALE 6	INSEAM	30	32	34	36	38	40	42	44	46	48	50
	31	X	X	X	X	X	X	X	X	X	X	X
	UNF	X	X	X	X	X	X	X	X	X	X	X

SOCKS

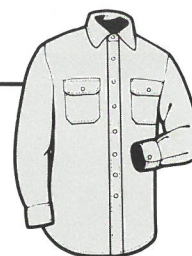
Style Number	Description & Color	Leg Length	Sizing	Content	Packaging
352	Sport & Hunt Sock Gray Red Brown Burgundy Navy Tan	15"	M 10-11½ L 12-13	90% Wool/10% Polyester	Dozen (Assorted)
355	Hunt Sock Red Green	15"	M 10-11½ L 12-13	90% Wool/10% Polyester	Dozen (Assorted)
360	Hunt Sock — Gray	16"	S 9-10 M 10-11½ L 12-13	75% Wool/25% Polyester (Top Stripe 100% Acrylic)	½ Dozen
367	Boot Sock — Gray	15"	M 10-11½ L 12-13	100% New Zealand Wool	Dozen
368	Boot Sock Green Blue Tan	16"	M 10-11½ L 12-13	90% Wool/10% Polyester	½ Dozen (Assorted)
370	Sport & Boot Sock Assorted	15"	M 10-11½ L 12-13	70% Wool/30% Polyester	Dozen (Assorted)
374	Hunt Sock — Grey Red Trim	15"	M 10-11½ L 12-13	70% Wool/30% Polypropylene	Dozen
378	Ragg Sock Gray Tan	12"	11-13	85% Wool/15% Stretch Nylon	½ Dozen (Assorted)
379	Ragg Sock Gray Tan	16"	11-13	85% Wool/15% Stretch Nylon	½ Dozen (Assorted)



Penn-Rich® Accessories

HEAVYWEIGHT CHAMOIS CLOTH SHIRTS

9 oz. — 100% Cotton
2 patch breast pockets with button flaps
Back yoke
Shirttail bottom
Length 31"
Felled seams for durability
Regulars S-4XL Longs M-3XL



Regulars Only

1374 Ecu
1377 Gray
1378 Blaze Camo
1573 Brown
1583 Taupe
1584 Silver

Regulars and Longs

1370 Dark Camo 1575 Navy
1373 Camo 1578 Alta Blue
1563 Spruce 1586 Cobalt
1564 Charcoal 1590 Burgundy
1572 Camel 1592 Red

BUFFALO SHIRTS

13-14 oz., 85% Wool/15% Nylon
2 patch bias breast pockets with button flaps
Length 32"
Felled seams for durability
Shirttail bottom
Regulars S-4XL Longs M-3XL



Regulars Only

90 White/Black
91 Red
92 Woolblaze® Orange
99 Green/Black

Regulars and Longs

93 Red/Black
95 Gray Heather/Med. Blue
96 Camel/Charcoal Heather
13271 Gray Ground

UTILITY VEST

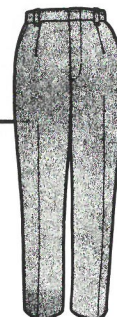
27 oz., 85% Wool/15% Nylon
4 front pockets
Size 36-50



12 Gray/Black Pinstripe

WOOL PANTS

85% Wool/15% Nylon
On-seam pockets
Rear flap pockets
Bar tacked pocket openings
Durable chain stitched seams
Belt loops
Suspender buttons
Size — Scale 6



1433	Utility Hunt Pant	Gray/Black Herringbone	18 oz. Fabric
1439	Malone™ Hunt Pant	Dark Green	22 oz. Fabric
1977	Malone™ Hunt Pant	Black w/Broken Stripe	27 oz. Fabric
1978	Malone™ Hunt Pant	Gray Heather	30 oz. Fabric
1990	Malone™ Hunt Pant	Charcoal w/Red & Green Overplaid	30 oz. Fabric



MALONE™ HUNT BIB

Quartertop pockets
2 back patch pockets
Button side entry
Bar tacked pocket openings
Durable chain stitched seams
Fly front
Adjustable elastic shoulder straps
Patch bib pocket

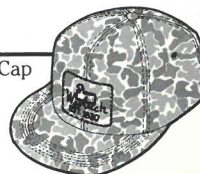
1994 Malone Hunt Bib XS-3XL 30 oz. Fabric
Charcoal w/Red & Green Overplaid

HATS

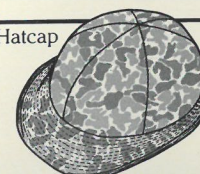
Wool Field Cap
14 oz., 85% Wool/
15% Nylon
Adjustable



CamWOOLflage® Field Cap
14 oz., 100% Wool
Adjustable



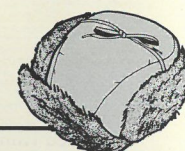
CamWOOLflage® Jones Hatcap
14 oz., 100% Wool
Thinsulate® Insulation
Sizes S-XL



2 Red and Black

5 Green
6 Tan

10 Green
11 Tan



Troopers Cap
Mouton Trim
Down insulation
Sizes M-XL

7 Tan

1987 PENN-RICH® HUNTING LINE BY WOOLRICH



BECAUSE IT TAKES EXPERIENCE TO KNOW WHEN IT'S RIGHT

SERVICE CHARGE

\$5 on orders less than \$100

SHIPMENTS

F.O.B. Woolrich, Pennsylvania, Jersey Shore, Pennsylvania, and/or Alliance, Nebraska.

MINIMUM ORDER

To qualify for seasonal dating, an account must place a preseason order for \$750.

PAST DUE ACCOUNTS

Interest will be charged at a rate to be determined by our prevailing cost at the time. Accounts not qualifying for open credit will be shipped on a cash-in-advance basis.

RETURNED GOODS POLICY

Merchandise may not be returned without prior approval. Upon valid request, an "R.G.A." (Returned Goods Authorization) will be promptly issued. We reserve the right to refuse unauthorized returns. Courtesy returns with our approval will be charged 10% of the original amount invoiced to cover the cost of restocking. There will be a \$15 charge for merchandise returned without prior approval.

PRICING

Subject to change without notification.

FALL TERMS

Fall orders may be written with a start ship date as early as May 1 and must be written with cancellation date of up to November 25. The orders would qualify for seasonal dating (1/3 9/10-10/10-11/10) \$750. minimum.

SALES CONFIRMATIONS

Orders submitted by our sales representatives or dealers will be edited by our Sales Services Dept. to ensure compliance with our terms. They will then be acknowledged for your verification. We will not honor conditions inconsistent with our acknowledged terms.

SALES REPRESENTATION

For further information on the Sales Representative(s) in your territory, please contact: Sales Services, Woolrich, Inc., Woolrich, PA 17779 717-769-6471

PAGE	STYLE	DESCRIPTION	PRICE
------	-------	-------------	-------

CamWOOLflage

2	155	Archer Hunt Shirt (Green)	\$25.00
2	155 L	Archer Hunt Shirt (Green)	27.50
2	156	Archer Hunt Shirt (Tan)	25.00
2	156 L	Archer Hunt Shirt (Tan)	27.50
2	745	Lebo Hunt Jacket (Tan)	50.00
2	746	Lebo Hunt Jacket (Green)	50.00
2	860	Aspen Hunt Jacket (Tan)	35.00
2	880	Aspen Hunt Jacket (Green)	35.00
2	1418	Archer Hunt Pant (Green)	30.00
2	1419	Archer Hunt Pant (Tan)	30.00
2	1981	Hemlock Hunt Bib (Tan)	40.00
2	1982	Hemlock Hunt Bib (Green)	40.00
2	7274	*Blanchard Hunt Parka (Tan)	92.50

SHADOWBARK CamWOOLflage

4	170	Compound Hunt Shirt	\$27.50
4	180	Compound Hunt Pant	30.00
4	940	Hickory Hunt Jacket	35.00

SHADOWBARK COMPETITOR CLOTH

4	147	Broadhead Hunt Shirt	\$14.75
4	157	Broadhead Hunt Pant	21.50
4	6737	Bush Hunt Coat	25.00

TAN COMPETITOR CLOTH

7	127	Fly-Way Hunt Shirt	\$ 14.75
7	6527	Fly-Way Hunt Pant	21.50
7	6550	*Gadwall Hunt Bib	65.00
7	7275	*Pintail Hunt Parka	88.75
7	7275 L	*Pintail Hunt Parka	97.63
7	21040	*Teal Hunt Parka	115.00
7	33402	Magnum Hunt Vest	37.50
7	33425	Birdmaster Jacket	42.50
7	33425 L	Birdmaster Jacket	46.75
7	33440	*Mallard Hunt Jacket	75.00
7	33450	*Mark IV Waterfowl Parka	127.50
7	33460	*Mallard Hunt Pant	55.00

PAGE	STYLE	DESCRIPTION	PRICE
------	-------	-------------	-------

GREEN COMPETITOR CLOTH

8	129	Brushmaster Hunt Shirt	\$14.75
8	815	Beechwood Hunt Jacket	27.50
8	6529	Brushmaster Hunt Pant	21.50
8	6730	Bush Hunt Jacket	25.00
8	21800	Pocono Hunt Vest	45.00
8	33432	Pine Mountain Parka	65.00

RED AND BLACK PLAIDS

10	66	Northern Tier Vest	\$16.00
10	124	Stag Jacket	30.00
10	124 L	Stag Jacket	33.00
10	503	Hunt Coat	48.50
10	503 L	Hunt Coat	53.35
10	505	Hunt Coat	47.50
10	523	Hunt Coat	48.50
10	523 L	Hunt Coat	53.35
10	626	White Tail Vest	18.50
10	1405	Hunt Pant	30.00
10	1963	Hunt Pant	32.50
10	1993	Hunt Pant	33.00
10	1995	Wool Hunt Bib	33.25
10	13054	Cruiser Coat	46.50
10	33480	Richie Hunt Coat (4-in-1)	92.50

BLAZE AND BLAZE CAMOUFLAGE

12	63	Safety Hunt Vest	\$ 7.25
12	981	Catskill Hunt Coat	45.00
12	7277	*Bucktail Hunt Parka	90.00
12	20084	Barrier Hunt Coat	45.00
12	20084 L	Barrier Hunt Coat	49.50
12	20094	Barrier Hunt Pant	30.00
12	21002	8 Pt. Barrier Hunt Coat	80.00
12	33319	Allegheny Hunt Pant	42.00
12	33379	Tioga Hunt Parka	60.00
12	33379 L	Tioga Hunt Parka	66.00
12	33435	High Country Hunt Parka	62.50
12	33470	Snow Mountain Hunt Bib	47.50

WOODLAND FLEECE CAMOUFLAGE

13	580	Sureflight Jacket	\$23.75
13	590	Sureflight Pant	22.50

PAGE STYLE DESCRIPTION PRICE

PENN-RICH® ACCESSORIES

SOCKS

13	352	Sport & Hunt Sock (Assorted — Gray, Red, Brown, Burgundy, Navy, Tan)	\$3.25
13	355	Hunt Sock (Assorted — Red, Green)	3.25
13	360	Hunt Sock (Gray)	3.50
13	367	Boot Sock (Gray)	4.50
13	368	Boot Sock (Assorted — Green, Blue, Tan)	4.50
13	370	Sport & Boot Sock (Assorted)	2.25
13	374	Hunt Sock (Gray w/Red Trim)	3.00
13	378	Ragg Sock (Assorted — Gray, Tan)	2.50
13	379	Ragg Sock (Assorted — Gray, Tan)	3.00

HEAVYWEIGHT CHAMOIS CLOTH SHIRTS

14	1370	Dark Camo	\$15.00
14	1370 L	Dark Camo	16.50
14	1373	Camo	15.00
14	1373 L	Camo	16.50
14	1374	Ecru	13.75
14	1378	Blaze Camo	15.00
14	1563	Spruce	13.75
14	1563 L	Spruce	15.13
14	1564	Charcoal	13.75
14	1564 L	Charcoal	15.13
14	1572	Camel	13.75
14	1572 L	Camel	15.13
14	1573	Brown	13.75
14	1575	Navy	13.75
14	1575 L	Navy	15.13
14	1578	Alta Blue	13.75
14	1578 L	Alta Blue	15.13
14	1583	Taupe	13.75
14	1584	Silver	13.75
14	1586	Cobalt	13.75
14	1586 L	Cobalt	15.13
14	1587	Emerald	13.75
14	1590	Burgundy	13.75
14	1590 L	Burgundy	15.13
14	1592	Red	13.75
14	1592 L	Red	15.13

PAGE STYLE DESCRIPTION PRICE

PENN-RICH® ACCESSORIES

BUFFALO SHIRTS

14	90	White/Black	\$19.25
14	91	Red	20.00
14	92	Woolblaze Orange	20.00
14	93	Red/Black	19.25
14	93 L	Red/Black	21.18
14	95	Gray Htr./Med. Blue	19.25
14	95 L	Gray Htr./Med. Blue	21.18
14	96	Camel/Charcoal Htr.	19.25
14	96 L	Camel/Charcoal Htr.	21.18
14	99	Green/Black	19.25
14	13264	Blue/Black	19.25
14	13271	Gray Ground	19.25
14	13271 L	Gray Ground	21.18

VEST

14	12	Utility Vest	\$15.00
----	----	--------------	---------

HUNT PANTS

14	1433	Utility Hunt Pant	24.50
14	1439	Malone Hunt Pant	\$26.50
14	1977	Malone Hunt Pant	26.50
14	1978	Malone Hunt Pant	30.00
14	1990	Malone Hunt Pant	26.50
14	1994	Malone Hunt Bib	33.25



PENN-RICH® ACCESSORIES

HATS

14	2	Field Cap (Red & Black)	20 per box	\$ 4.00 (\$80.00)
14	5	CamWOOLflage Field Cap (Green)	20 per box	4.00 (80.00)
14	6	CamWOOLflage Field Cap (Tan)	20 per box	4.00 (80.00)
14	7	Troopers Cap (Down w/Mouton Trim)	single	15.00 (80.00)
14	10	CamWOOLflage Jones Hatcap (Green)	12 per box (1-4-5-2)	8.00 (96.00)
14	11	CamWOOLflage Jones Hatcap (Tan)	12 per box (1-4-5-2)	8.00 (96.00)

SIZE SCALES

SCALE 6											
INSEAM	30	32	34	36	38	40	42	44	46	48	50
31	X	X	X	X	X	X	X	X	X	X	
UNF	X	X	X	X	X	X	X	X	X	X	X

SCALE 8											
INSEAM	30	32	34	36	38	40	42	44	46	48	50
UNF	X	X	X	X	X	X	X	X	X	X	X

EXTREME SIZES

Regulars

SIZES	SURCHARGE
48-50, 2X-3X	10%
52-54, 4X	16%
56-60	16%

Longs

SIZES	SURCHARGE
M-XL	10%
40-46	10%
48-50, 2X	16%
3X	16%